

1) Give the correct representation in visual basic for the following equations:

1. $7\cos(t) + 3\sin^2(t)$.

2. $|289 - y^3 - x^2|$

Ans:

1. `7 * math.cos(t) + 3*(math.sin(t) * math.sin(t))`.

2. `math.abs(289 - (y^3) - (x^2))`

2) What is the result of execution of the following functions:

1. `strings.Lcase("COMputer softWARE")`

2. `4 + Math.Truncate(456.467)`

3. `strings.len("math")`

Ans:

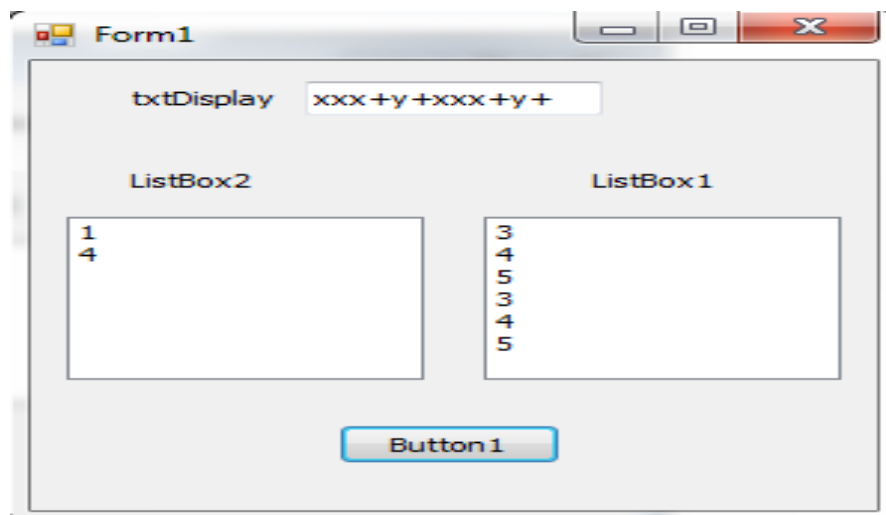
1. computer software.

2. 460.

3. 4.

3) What will be the output in textbox (txtDisplay) after the following statement block execute ? also show the content of listBox1 and listBox2.

```
Private Sub Button1_Click()  
  
Dim i, j As Integer  
txtDisplay.Text = ""  
  
    For i = 1 To 6 Step 3  
  
        For j = 3 To 5  
  
            txtDisplay.Text = txtDisplay.Text & "x"  
            ListBox1.Items.Add(j)  
        Next j  
  
        txtDisplay.Text = txtDisplay.Text & "+" & "y" & "+"  
        ListBox2.Items.Add(i)  
    Next i  
  
End Sub
```



6) What is the result of execution of the following functions:

1. `math.Sqrt(81)`.
2. `math.Pow(3, 5)`.
3. `math.Round(676.37)`
4. `math.max (785, 960)`.
5. `math. min(21, 8)` .
6. `math .abs (5)`.

Ans:

1.9

2.243

3.676

4.960

5.8

6.5

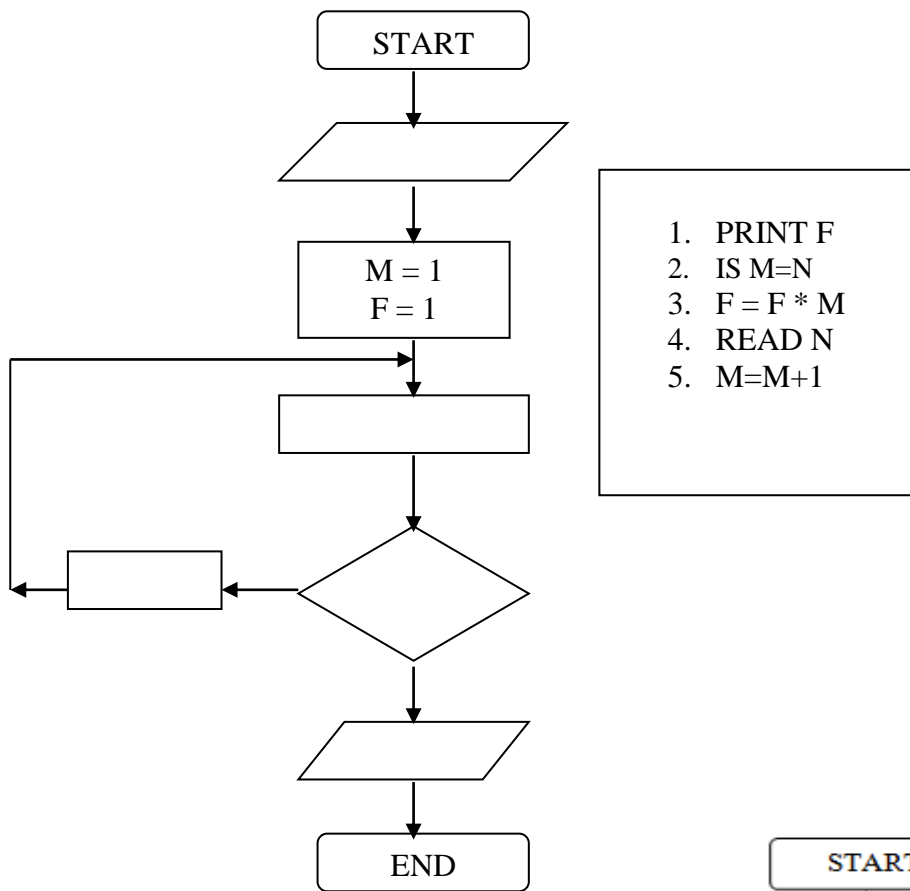
7) Answer by True or False and correct statement :

1. The variable with name (MA&) is valid
2. `MsgBox(Math.Sqrt(49))` will give 7 as result
3. This code is a correct declaration for the message box `msgbox ("Input your grade:")`
4. This code is a correct declaration for variable (`dim x as integer`)
5. To make button visible in your program this code (`button1.visible =true`) is used.

Ans:

1. True
2. True
3. True
4. True
5. True

8) complete the flowchart for computing factorial N Where $N! = 1 \times 2 \times 3 \times \dots \times N$ from the following statement .



Ans:

