

# 6

The time • Present Simple – *he/she/it, usually/sometimes/never* • Questions and negatives – *Yes/No* questions, *do/does/don't/doesn't* • Days of the week

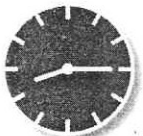
## Every day

### The time

1 Write the times.



1 It's eight o'clock.



2 \_\_\_\_\_



3 \_\_\_\_\_



4 \_\_\_\_\_



5 \_\_\_\_\_



6 \_\_\_\_\_

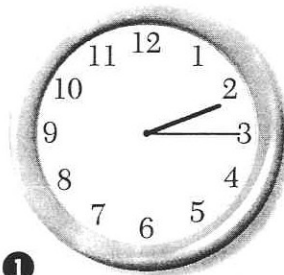


7 \_\_\_\_\_

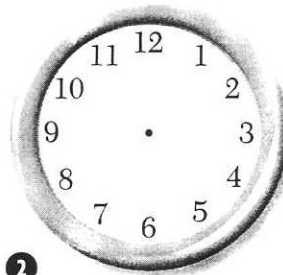


8 \_\_\_\_\_

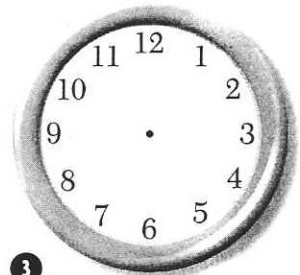
2 **T 6.1** Listen. Draw the times.



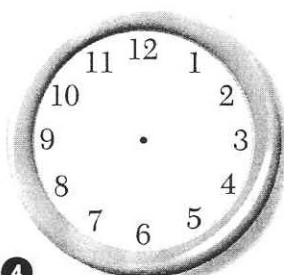
1



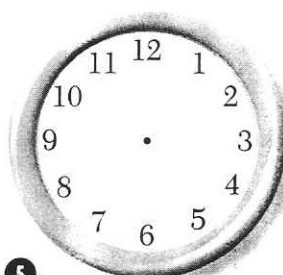
2



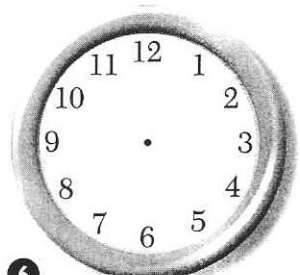
3



4



5



6

What time do you ... ?

3 **T 6.2** Answer the questions. Write true answers about you.

1 What time do you get up?

I get up at

2 What time do you have breakfast?

\_\_\_\_\_

3 What time do you go to work/school?

\_\_\_\_\_

4 What time do you have lunch?

\_\_\_\_\_

5 What time do you get home?

\_\_\_\_\_

6 What time do you go to bed?

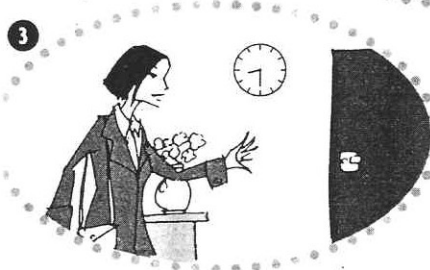
\_\_\_\_\_

# Present Simple

he/she/it

4 Look at the pictures and complete the sentences about Marta's day.

- 1 Marta **gets up** at seven thirty.
- 2 She \_\_\_\_\_ tea and toast for breakfast.
- 3 She \_\_\_\_\_ home at \_\_\_\_\_.
- 4 She \_\_\_\_\_ to work by car.
- 5 She \_\_\_\_\_ a sandwich for lunch.
- 6 She \_\_\_\_\_ home at \_\_\_\_\_.
- 7 She sometimes \_\_\_\_\_ out in the evening.



usually/sometimes/never

5 Write the sentences again with the words in brackets.

- 1 Marta has breakfast at 7.45. (usually)  
**Marta usually has breakfast at 7.45.**
- 2 Marta goes to work by bus. (never)  
\_\_\_\_\_
- 3 She has a sandwich in her office. (usually)  
\_\_\_\_\_
- 4 She leaves work at 5.30. (usually)  
\_\_\_\_\_
- 5 She works in the evening. (never)  
\_\_\_\_\_
- 6 She goes to a restaurant in the evening. (sometimes)  
\_\_\_\_\_

6 Write three sentences about you. Use *usually*, *sometimes*, and *never*.

- 1 **I usually go to work by car.**
- 2 \_\_\_\_\_
- 3 \_\_\_\_\_
- 4 \_\_\_\_\_

## Questions and negatives

7 Put the words in the correct order to make questions.

- 1 Angeles / get up / does / what time / ?  
What time does Angeles get up?
- 2 live / where / Angeles / does / ?  
\_\_\_\_\_
- 3 breakfast / does / have / she / ?  
\_\_\_\_\_
- 4 go / when / she / does / to the concert hall / ?  
\_\_\_\_\_
- 5 she / usually have / does / lunch / where / ?  
\_\_\_\_\_
- 6 she / sometimes do / does / in the afternoon / what / ?  
\_\_\_\_\_
- 7 dinner / have / does / she / what time / ?  
\_\_\_\_\_
- 8 usually go out / in the evening / she / does / with friends / ?  
\_\_\_\_\_



**Angeles  
Pérez**

Angeles Pérez is a violinist. She plays in the New York Philharmonic. She lives in a flat in Manhattan.

She gets up at six o'clock and has a cup of coffee. She practises the violin until eight o'clock. She doesn't have breakfast. At nine o'clock she goes to the concert hall and plays with the orchestra. She usually has lunch at home. In the afternoon she sometimes goes for a walk in Central Park, and then listens to music.

At six o'clock she cooks dinner and drinks a glass of beer. In the evening she usually goes out with friends. She never listens to music in the evening!

8 **T 6.3** Read and listen to the text. Answer the questions in exercise 7.

- 1 She gets up at six o'clock.
- 2 \_\_\_\_\_
- 3 \_\_\_\_\_
- 4 \_\_\_\_\_
- 5 \_\_\_\_\_
- 6 \_\_\_\_\_
- 7 \_\_\_\_\_
- 8 \_\_\_\_\_

9 Complete the sentences about Angeles. Use the negative.

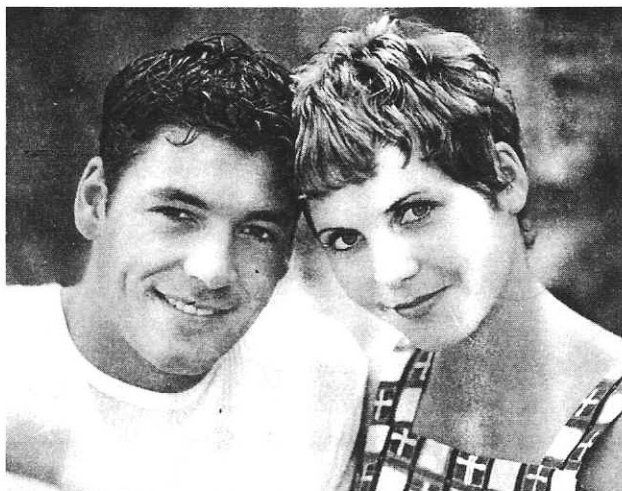
- 1 She doesn't get up at seven o'clock.
- 2 She \_\_\_\_\_ in a house.
- 3 She \_\_\_\_\_ breakfast.
- 4 She \_\_\_\_\_ lunch at work.
- 5 She \_\_\_\_\_ wine with her dinner.
- 6 She \_\_\_\_\_ to music in the evening.

10 Make the sentences negative.

- 1 Andreas lives in Britain.  
Andreas doesn't live in Britain.
- 2 Shinji leaves work at one forty-five.  
\_\_\_\_\_
- 3 Raoul goes to work by taxi.  
\_\_\_\_\_
- 4 Ramiro eats toast for breakfast.  
\_\_\_\_\_
- 5 Piet gets home at four thirty.  
\_\_\_\_\_
- 6 Oliver speaks French.  
\_\_\_\_\_
- 7 Lidia works in a bank.  
\_\_\_\_\_
- 8 Raquel has three children.  
\_\_\_\_\_

## Yes/No questions

- 11 Look at the information about Rosa and Paolo. Write questions and short answers.



	Rosa	Paolo
1 get up early?	✓	✗
2 go to work by car?	✗	✓
3 drink wine?	✓	✗
4 speak English?	✓	✗

### Rosa

- 1 A Does Rosa get up early?

B Yes, she does.

- 2 A \_\_\_\_\_

B \_\_\_\_\_

- 3 A \_\_\_\_\_

B \_\_\_\_\_

- 4 A \_\_\_\_\_

B \_\_\_\_\_

### Paolo

- 1 A Does Paolo get up early?

B No, he doesn't.

- 2 A \_\_\_\_\_

B \_\_\_\_\_

- 3 A \_\_\_\_\_

B \_\_\_\_\_

- 4 A \_\_\_\_\_

B \_\_\_\_\_

## do/does/don't/doesn't

- 12 Complete the sentences. Use *do*, *does*, *don't*, or *doesn't*.

1 'Does he have breakfast?' 'No, he doesn't.'

2 We speak Spanish, but we \_\_\_\_\_ speak French.

3 '\_\_\_\_\_ you like beer?' 'No, I \_\_\_\_\_.'

4 '\_\_\_\_\_ they usually go out in the evening?' 'Yes, they \_\_\_\_\_.'

5 '\_\_\_\_\_ Françoise live in Spain?' 'Yes, she \_\_\_\_\_.'

6 He \_\_\_\_\_ have an American car. He has a Japanese car.

7 She usually goes to bed at twelve o'clock. She \_\_\_\_\_ go to bed early.

## Translation

- 13 Write the sentences in your language.

1 She leaves home at eight forty-five.

2 'Does Idoia live in Manchester?' 'No, she doesn't.'

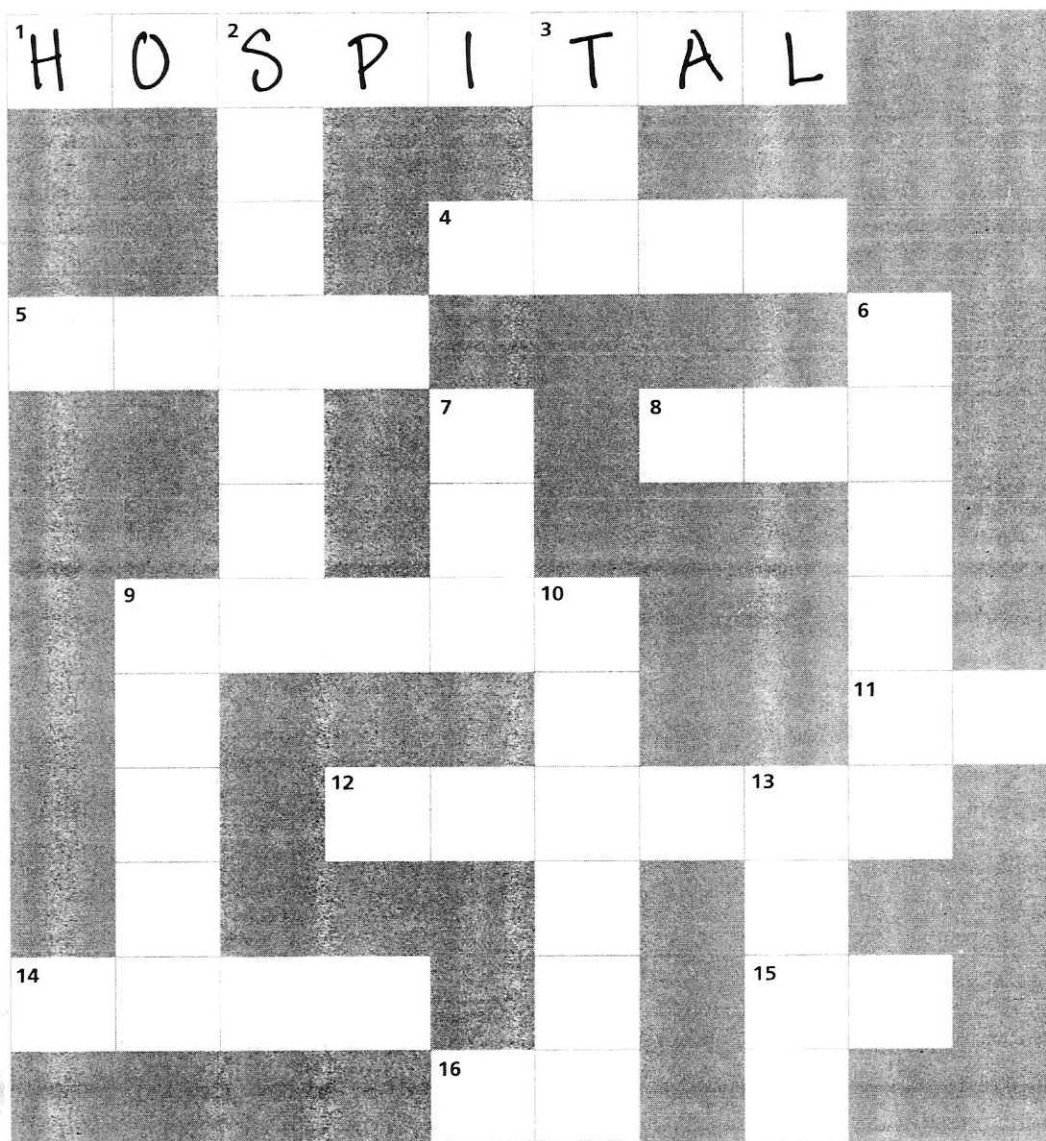
3 'Where does Thomas live?' 'In Oxford.'

4 Maria doesn't go to work by bus.

5 Osman never stays at home in the evening.

# Vocabulary

14 Complete the crossword.



## Across →

- 1 Antonella is a doctor. She works in a \_\_\_\_\_. (8 letters)
- 4 Sandra never \_\_\_\_\_ in restaurants. (4 letters)
- 5 I usually have a glass of \_\_\_\_\_ at seven o'clock. (4 letters)
- 8 She has a German \_\_\_\_\_. It's a BMW. (3 letters)
- 9 'What's your \_\_\_\_\_ number?' '243806.' (5 letters)
- 11 'Are you from Canada?' 'Yes, I \_\_\_\_\_.' (2 letters)
- 12 ten, \_\_\_\_\_, thirty, forty, fifty ... (6 letters)
- 14 'What's your job?' 'I'm a \_\_\_\_\_ driver.' (4 letters)
- 15 'What's your name?' '\_\_\_\_\_ name's Joseph.' (2 letters)
- 16 She's \_\_\_\_\_ artist. (2 letters)

## Down ↓

- 2 He lives in Spain, but he doesn't speak \_\_\_\_\_. (7 letters)
- 3 Do you want \_\_\_\_\_ or coffee? (3 letters)
- 6 Today is Thursday. Tomorrow is \_\_\_\_\_. (6 letters)
- 7 We have two children – a daughter and a \_\_\_\_\_. (3 letters)
- 9 'Do you like \_\_\_\_\_?' 'No, I don't like Italian food.' (5 letters)
- 10  $6 + 5 =$  \_\_\_\_\_ (6 letters)
- 13 'What \_\_\_\_\_ is it, please?' 'It's ten o'clock.' (4 letters)

## Listening

### Anna's day

15 **T 6.4** Listen. What does Anna do at these times?

1 10.00 in the evening

She goes to work.

2 6.15 in the morning

3 7.30 in the morning

4 3.00 in the afternoon

5 3.30 in the afternoon

6 8.30 in the evening



## Writing

### Your day

16 Write about your day. Use the words in the box.

play have breakfast/lunch/dinner go to school/work  
get home get up listen to music watch television  
go shopping in the morning/afternoon/evening  
usually/sometimes/never stay at home go out

---

---

---

---

---

---

---

---

---

---

## Everyday English

### Days of the week

17 Write the days of the week.

1 o d m y n a = Monday

2 r y f a d i = \_\_\_\_\_

3 d y e t a s u = \_\_\_\_\_

4 t y u s h d r a = \_\_\_\_\_

5 d u s a y n = \_\_\_\_\_

6 d w y s e e a d n = \_\_\_\_\_

7 a d t y r s u a = \_\_\_\_\_

18 Write the days of the week in the correct order.

Sunday

---

---

---

---

---

---

### in/on/at

19 Complete the sentences. Use *in*, *on*, or *at*.

1 I play tennis on Saturday morning.

2 I usually have lunch \_\_\_\_\_ one o'clock.

3 I never get up late \_\_\_\_\_ Sunday morning.

4 What do you do \_\_\_\_\_ the weekend?

5 We sometimes listen to the radio \_\_\_\_\_ the evening.

6 \_\_\_\_\_ Wednesday I sometimes go swimming.

7 \_\_\_\_\_ the morning he works at home.

8 'What time do you leave work?' ' \_\_\_\_\_ five thirty.'

9 They usually stay at home \_\_\_\_\_ the afternoon.